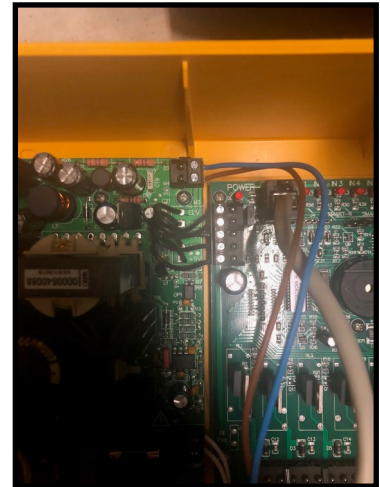


Lavo OPL Flush Manifold

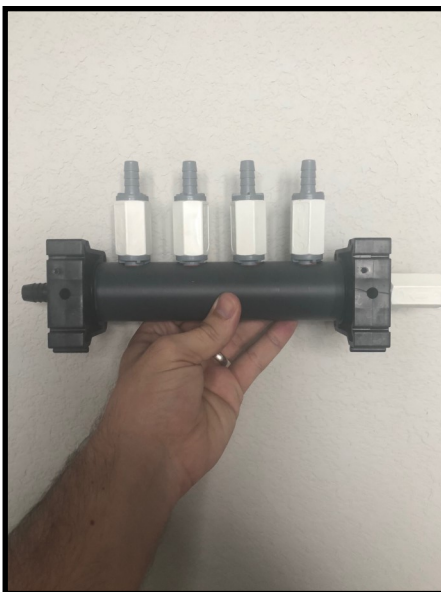


Attaching the Solenoid and Wiring it to the LavoWash OPL:

STEP 1: Find the mounting groove on the right side of the LavoWash OPL.

STEP 2: Use the wire connected to the solenoid, and feed it through the strain relief on the bottom of the LavoWash OPL.

STEP 3: Connect the wires to the circuit board. Blue connects to the top, and brown connects to the bottom.



Plumbing the manifold.

STEP 4: Using the mounting brackets provided, determine the location to mount the manifold. Use one bracket to mark the location. Use a drill to screw the bracket in place. Follow these steps for the second bracket. Use the measurements provided below to mark the distance between the brackets.

4 Port hole center-to-hole center = 7 1/4"; 6 Port hole center-to-hole center = 10.5".

STEP 5: Use a 3/4" FGHT to connect the water inlet. Use the 3/8" ID x 1/2" OD Vinyl tubing to connect the manifold to the inlet check valve.