



## LavoDose Series

---










# INSTRUCTION MANUAL

Safety / Tech Specs / Metering Tip Chart	2
Mounting the units	3 - 4
Troubleshooting	5
Spare Parts	6

# Safety

## READ CAREFULLY BEFORE INSTALLING:

-  Read this manual carefully for installation instructions.
-  DO NOT INSTALL the dispenser where it is directly exposed to vapors, chemical fumes, or next to heat sources.
-  PROTECT YOURSELF - Always wear personal protective equipment. Use gloves, eye ware, and appropriate attire when working with chemicals.
-  FOLLOW THE SAFETY AND HANDLING INSTRUCTION of the chemical manufacturer.
-  NEVER point the discharge hose at yourself.
-  Always check local plumbing codes to ensure compliance.
-  THE DISPENSER SHOULD BE INSTALLED approximately 5' above the chemical container.

## Technical Specifications

Water Inlet	Left or Right
Type of Connection	3/4" Female GHT
Actuators	Button, Dial, Slide
Product Dimensions	9" H x 4" W x 5" D
Operating Pressure	20PSI to 100PSI
Temperature	Max 160 degrees F

 Dilution Chart Note: Dilutions will vary. Tested with water.

Tips tested at 40PSI with water products







**Flex Gap**

Tips tested at 40PSI with water product

**Air Gap**

	Tip Color	1 GPM		3.5 GPM			Tip Color	1 GPM		4 GPM	
		Oz/Gal	Ratio	Oz/Gal	Ratio			Oz/Gal	Ratio	Oz/Gal	Ratio
Standard Metering Tip	No Tip	50	2:1	22	6:1	Standard Metering Tip	No Tip	38	3:1	16	8:1
	Grey	49	3:1	21	6:1		Grey	39	3:1	16	8:1
	Black	44	3:1	20	6:1		Black	38	3:1	13	10:1
	Beige	32	4:1	14	9:1		Beige	31	4:1	12	10:1
	Red	20	6:1	9	13:1		Red	22	6:1	9	13:1
	White	13	9:1	6	20:1		White	15	8:1	6	20:1
	Blue	12	11:1	5	23:1		Blue	13	10:1	6	22:1
	Tan	9	14:1	4	32:1		Tan	9	14:1	5	27:1
	Green	6	20:1	2	53:1		Green	7	18:1	3	39:1
	Orange	5	24:1	1.8	69:1		Orange	5	24:1	2	53:1
	Brown	3.4	36:1	1.5	80:1		Brown	4	28:1	2	55:1
	Yellow	3.3	37:1	1.3	96:1		Yellow	4	32:1	1.8	68:1
	Aqua	2.6	46:1	1	121:1		Aqua	3	44:1	1.5	83:1
	Purple	1.3	91:1	0.6	217:1		Purple	2	77:1	1.1	115:1
	Pink	0.7	182:1	0.3	400:1		Pink	1	154:1	0.7	182:1
Clear	No hole				Clear	No hole					
Ultralean Tip	Lime	0.5	233:1	0.3	476:1	Ultralean Tip	Lime	0.5	238:1	0.2	588:1
	Burgundy	0.4	333:1	0.2	625:1		Burgundy	0.4	303:1	0.2	769:1
	Pumpkin	0.3	435:1	0.15	833:1		Pumpkin	0.3	357:1	0.1	1000:1
	Copper	0.2	625:1	0.1	1250:1		Copper	0.29	417:1	0.09	1429:1






# Mounting Instructions

<p><b>Step 1</b></p> 	<p>Use the backplate as a template to mark the mounting hole pattern. Drill a hole for the supplied 1/4" anchors and mount the bracket with the screws provided in the accessory kit.</p>
<p><b>Step 2</b></p> 	<p>Attach the system to the backplate and slide it down. The tab will make a clicking noise when the dispenser secured.</p>
<p><b>Step 3</b></p> 	<p>Slide in the discharge hose (6.5ft or "S" tube) over the barbed fitting and make sure it is secured.</p>
<p><b>Step 4</b></p> 	<p>Connect the water inlet supply.</p>
<p><b>Step 5</b></p> 	<p>Select the metering tip for your desired dilution and connect the supply tubing.</p>
<p><b>Step 6</b></p> 	<p>Connect the ceramic weight on the opposite end of the tube with the foot valve.</p>

# Mounting Instructions

## Multiple Unit Installation

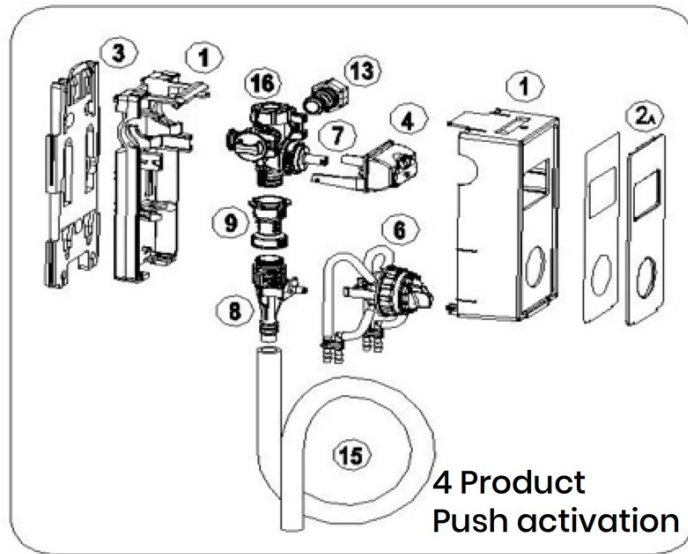
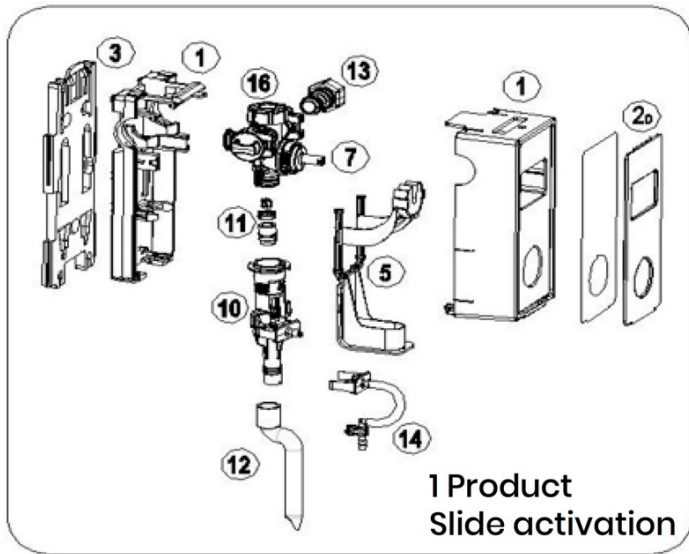
After mounting the backplate, follow these instructions:

<p><b>Step 1</b></p> 	<p>Slide the second bracket into the slot from top to bottom on the left side of bracket 1 until they are properly aligned and secure.</p>
<p><b>Step 2</b></p> 	<p>Unlock the left side of the first system by pulling the rear clip to its outward most position as shown and remove the end cap.</p>
<p><b>Step 3</b></p> 	<p>Unlock the right side of the second system by pulling the clip to its outward most position and remove the water connection.</p>
<p><b>Step 4</b></p> 	<p>Insert the coupling nipple into the first unit as illustrated. Connect the second unit to the first.</p>
<p><b>Step 5</b></p> 	<p>Apply the combined on to the bracket and complete the installation (follow Step 3 from mounting instructions).</p>

# Troubleshooting

Problem	Cause	Solution
System does not dispense solution	<ol style="list-style-type: none"> <li>1. Water inlet strainer is clogged</li> <li>2. Too much water pressure</li> <li>3. Insufficient water pressure</li> <li>4. The venturi is clogged</li> <li>5. Activation valve is clogged by mineral</li> </ol>	<ol style="list-style-type: none"> <li>1. Clean it or replace if necessary</li> <li>2. Use a water pressure regulator in case of more than 100PSI</li> <li>3. 20PSI is the minimum required pressure.</li> <li>4. Soak venturi in hot water and inspect visually, gently removing debris. Replace assembly if needed.</li> <li>5. Soak the valve assembly in a solution of hot water and limescale remover. Replace assembly if needed.</li> </ol>
Water flow won't stop	<ol style="list-style-type: none"> <li>1. Activation valve is clogged by minerals or other water borne debris</li> </ol>	<ol style="list-style-type: none"> <li>1. Soak the valve parts and valve seat in limescale remover to clean. Replace them if necessary.</li> </ol>
Activation valve is leaking	<ol style="list-style-type: none"> <li>1. Valve cap not tight enough to seat</li> <li>2. Not properly positioned</li> </ol>	<ol style="list-style-type: none"> <li>1. Firmly hand tighten the valve cap until leak stops.</li> <li>2. Reposition the valve or change it if necessary</li> </ol>
Connections and end cap are leaking	<ol style="list-style-type: none"> <li>1. Missing o-ring in the connection fitting and / or end cap</li> <li>2. O-ring in the connections or end cap are damaged</li> </ol>	<ol style="list-style-type: none"> <li>1. Apply the o-ring or replace the entire part</li> <li>2. Replace the o-rings or replace the entire end cap</li> </ol>
Flex gap is leaking	<ol style="list-style-type: none"> <li>1. Flexible membrane is damaged</li> </ol>	<ol style="list-style-type: none"> <li>1. Replace the Flex Gap</li> </ol>
A-gap is spraying out and or leaking	<ol style="list-style-type: none"> <li>1. Limescale film or dirt on the A-gap's upper nozzle</li> <li>2. Venturi coated with limescale or dirt</li> <li>3. There is a buildup or clog in the discharge hose</li> <li>4. Discharge hose is above the dispenser</li> </ol>	<ol style="list-style-type: none"> <li>1. Soak in hot water and limescale remover to remove buildup. Replace if necessary</li> <li>2. Soak in hot water and limescale remover to clean. Replace it if necessary</li> <li>3. Clean the hose to eliminate restriction</li> <li>4. Make sure the discharge hose dispenses below the dispenser insuring no back pressure</li> </ol>
Improper concentration of chemical or no suction	<ol style="list-style-type: none"> <li>1. Insufficient water pressure</li> <li>2. Metering tip clogged</li> <li>3. Foot valve clogged</li> <li>4. Venturi clogged</li> <li>5. Air leak in chemical pick up tubing line</li> <li>6. Product is too thick</li> <li>7. Product container is too far from the system</li> <li>8. Excess concentration</li> </ol>	<ol style="list-style-type: none"> <li>1. 14PSI is the minimum working pressure.</li> <li>2. Replace tip</li> <li>3. Soak in hot water, hand clean or change it</li> <li>4. Soak in hot water or limescale remover to clean. Replace it if necessary</li> <li>5. Check the entire line. Replace the tubing check the connections and cable tie</li> <li>6. Change the pick up hose. Switch to a bigger diameter. (need ¼ x 5/16 coupler)</li> <li>7. The standard installation is positioning the tank under the system, 5ft max</li> <li>8. Tip is not the correct one or not inserted fully.</li> </ol>
System continues to draw chemical after the valve is closed	<ol style="list-style-type: none"> <li>1. Chemical tank is positioned higher than the dispenser causing siphoning</li> </ol>	<ol style="list-style-type: none"> <li>1. Move chemical container below the dispenser discharge point</li> </ol>

# Spare Parts



#	Description	Lavo Part Number
1	Housing (rear + front)	100-0084
	Clear faceplate - 1 Product Button	100-0040
2	Clear faceplate - 1 Product Slide	100-0041
	Clear faceplate - 4 Product Button	100-0042
	Clear faceplate - 4 Product Slide	100-0043
3	Mounting Bracket	100-0083
4	Complete Button Spare Kit	100-0046
5	Complete Slide Spare Kit	100-0056
6	Complete Selector Spare Kit	100-0079
7	Complete Activation Valve Spare Kit	100-0081
	Flex Gap venturi grey spare kit 1GPM (4lt / min)	100-0011
8	Flex Gap venturi yellow spare kit 4GPM (16lt / min)	100-0010
9	Flex Gap backflow Spare Kit	100-0085
10	Complete Air Gap & Venturi 1GPM (4lt / min) spare kit	100-0013
	Complete Air Gap & Venturi 4GPM (16lt / min) spare kit	100-0012
11	Air Gap Nozzles 1GPM (4lt / min) kit (10 pcs)	100-0077
	Air Gap Nozzles 4GPM (16lt / min) kit (10 pcs)	100-0078
12	Bottle "S" filling hose	100-0018
13	Water inlet fitting kit	100-0082
14	Inlet Filling kit - 1 product	100-0080
15	Bucket filling hose	100-0019
16	Top Filter kit	100-0047
	Flow Stabilizer - 1GPM (4lt / min)	100-0001
	Flow Stabilizer - 4GPM (16lt / min)	100-0002

#### Other parts not shown above

Description	Lavo Part Number
Foot valve + Viton check valve Yellow	100-0023
PVC clear tubing - 13ft length	100-0025
LavoDose Drip Tray - 2pcs per box	100-0032
Standard Metering Tips - 15pcs	100-0020
Ultra Lean metering Tips - 4pcs	100-0021
Wire Rack - Four Gallon	100-0034
6ft inlet water hose - black	100-0035