

 Connected



Simple.  
Clean.  
Connected.

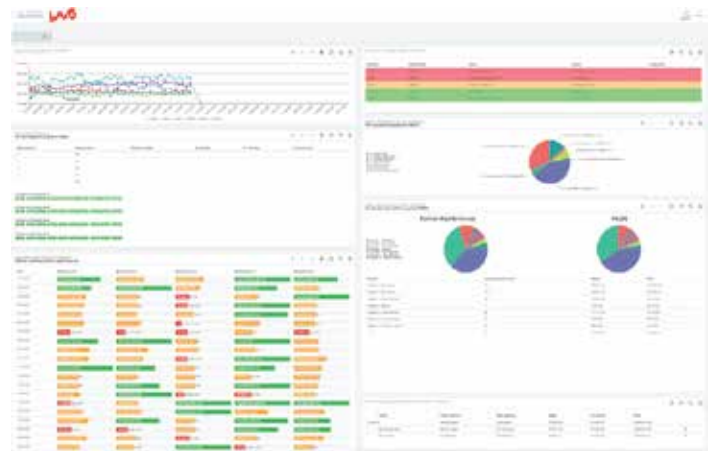
# Dispensing Solutions

## Why invest in Connected Equipment?

- Immediate ROI. Systems can cost less than 1 service call
- Increase efficiency and revenue
- Maximize account profitability
- Reduce service costs up to 30%
- Immediate email alert notifications of warnings, issues and errors
- 100% asset visibility
- Significantly improve customer response time (proactive vs reactive)

## Overview

- Total overview of formulas, chemical injections and usage, plant efficiency and flow rates
- Clear and consistent documentation and reporting capabilities
- Encrypted and secured data and software



Custom Dashboard

## Reporting features



Product consumption & low level alarms



Inventory control and facility overviews



Live detailed washer and tunnel views



Asset visibility map



Firehouses



Education



Nursing / Senior Care



Hotels / Motel OPL Laundry



Healthcare Co-Op



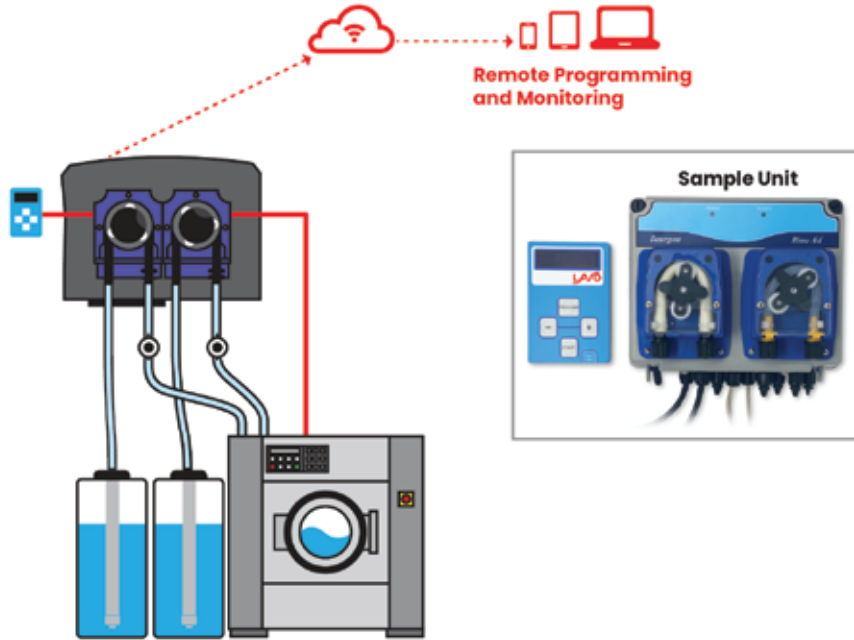
Industrial Linen & Uniform



Sport / Fitness

 Connected  
**OPL GoLink Pro**

**LAVO** Simple.  
Clean.  
Connected.



### Key Features

- Controlled dosing and proof of delivery via flow meter technology for warewash and laundry
- 24/7 remote monitoring and access
- Remote calibration, programming and troubleshooting
- Cellular connectivity for uninterrupted service and safest data transmission
- Data encryption is standard
- Installation hardware included
- Optional keypad for programming
- Optional third chemical pump

### Specifications

- Pump output: 10 oz / min
- Voltage 120/240 VAC 50/60Hz
- Tubing recommendation: 1/4" OD
- Squeeze tube / flow meter fittings: 1/4" OD compression
- IP65 rated enclosure
- Isolated signal inputs 24VDC up to 240VAC
- Cellular based 4G / LTE
- Recommended for washers up to 150lb

### Spare Parts

- Pneumatic or Electromagnetic pump
- 24 VDC aid distributor valve
- 24 VDC electroc distribution valve



Firehouses



Education



Nursing /  
Senior Care



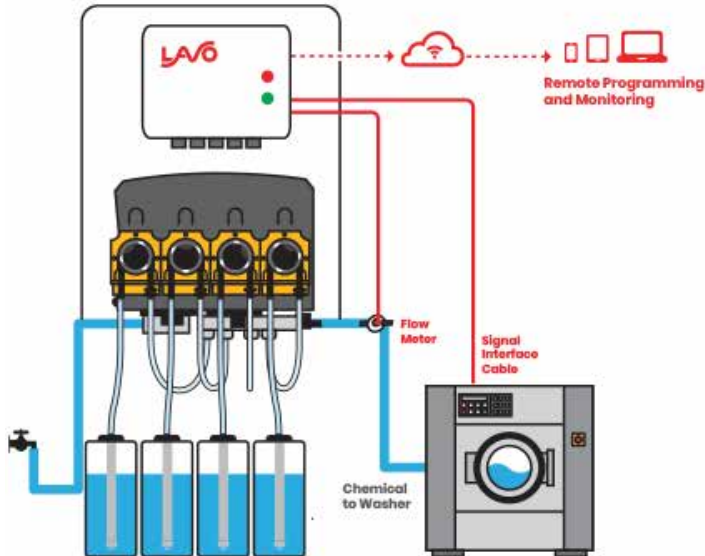
Hotels / Motel  
OPL Laundry



Sport /Fitness

# Connected OPL OPLink Pro

**LAVO** Simple.  
Clean.  
Connected.



## Key Features

- Complete system with controlled dosing and proof of delivery via flow meter technology
- Integrated signal interface
- 24/7 remote monitoring and access
- Remote calibration, programming and troubleshooting
- Cellular connectivity for uninterrupted service and safest data transmission
- Data Encryption is standard
- Integrated water valve, flush manifold and flow meter
- Installation hardware included
- Option for up to 6 chemical pumps

## Specifications

- Pump Output up to 68oz / min
- Voltage 120/240 VAC 50/60Hz
- Tubing recommendation: 3/8 ID (inlet / outlet)
- Squeeze Tube / Flow Meter Fittings: 3/8" barbed compression
- IP65 rated enclosure
- Isolated inputs 24VDC up to 240VAC
- Cellular based 3G / LTE
- Recommended max washer capacity: 450lbs



Firehouses



Education



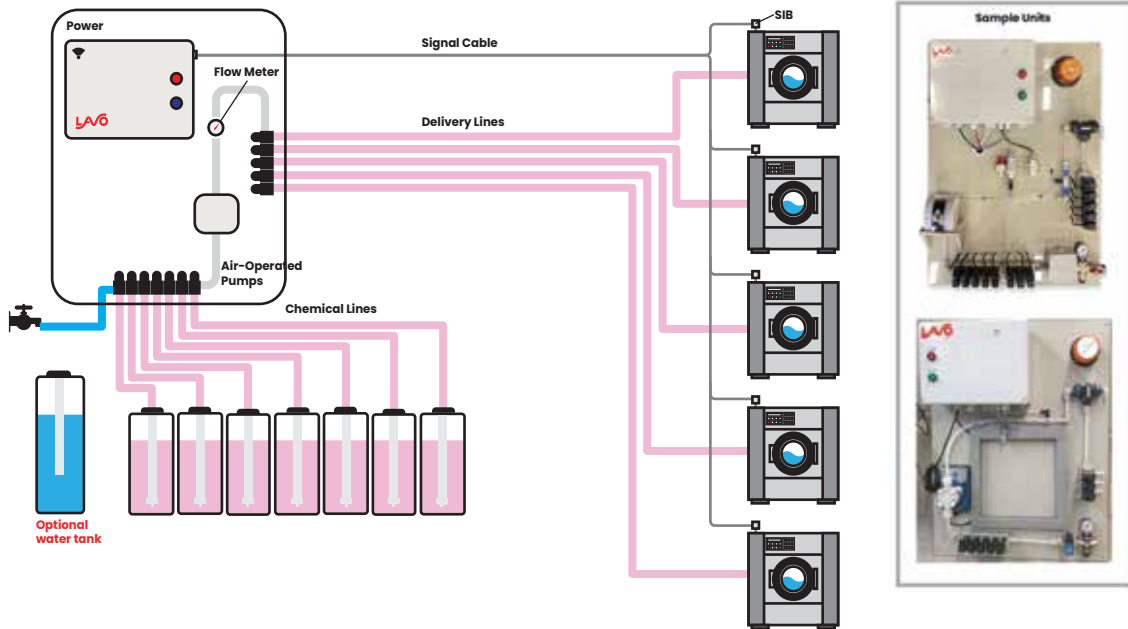
Nursing /  
Senior Care



Hotels / Motel  
OPL Laundry



Sport /Fitness



## Key Features

- Controlled dosing and proof of delivery via flow meter technology
- Connects up to 5 washers and 8 chemicals on one panel
- 24/7 remote monitoring and access
- Remote calibration, programming and troubleshooting
- Cellular connectivity for uninterrupted service and safest data transmission
- Data encryption is standard
- Air assisted flush available
- Installation hardware kits available

## Specifications

- Pump Output: 1.3 gal/min (5 L/min)
- Voltage 120/240 VAC 50/60Hz
- Tubing recommendation: 3/8 ID (inlet / outlet)
- Isolated inputs 24VDC up to 230 VAC
- IP65 rated electronics enclosure
- Pneumatic or electromagnetic pumps
- Cellular based 3G / LTE
- Recommended max washer capacity: 450lbs
- Water connection: 1/2" hose barb
- Air connection: 1/4"OD push to connect

## Spare Parts

- Pneumatic or Electromagnetic pump
- 24 VDC air distributor valve
- 24 VDC electric distribution valve



Firehouses



Education



Nursing /  
Senior Care



Hotels / Motel  
OPL Laundry



Sport /Fitness

## Wash Extractors



### Key Features – Washer Extractors

- Controlled dosing and proof of delivery via flow meter technology
- Simultaneously dose tunnel and washer extractors from a single cabinet
- Connect up to 15 wash extractors
- 24/7 remote monitoring and access
- Remote calibration, programming and troubleshooting
- Cellular connectivity for uninterrupted service and safest data transmission
- Free standing cabinet

### Specifications – Washer Extractors

- Pump Output up to 300 oz / min
- Voltage: 120/240 VAC 50/60 Hz
- Tubing Recommendation: 3/8" ID (inlet / outlet)
- Isolated inputs 24 VDC
- Cellular based - 4G / LTE
- Pneumatic pumps & valves
- Recommended maximum tunnel capacity – 250 lb pockets
- Water Connection - 3/4" hose barb
- Air Connection - 1/4" OD Push to Connect



Education



Nursing /  
Senior Care



Hotels / Motel  
OPL Laundry



Healthcare  
Co-Op



Industrial  
Linen & Uniform





## Key Features - Tunnels

- Controlled dosing and proof of delivery via flow meter technology
- Simultaneously dose multiple tunnel modules
- Connect up to 7 injection points or direct feed per product
- 24/7 remote monitoring and access
- Remote calibration, programming and troubleshooting
- Cellular connectivity for uninterrupted service and safest data transmission
- Free standing cabinet

## Specifications - Tunnels

- Pump output: up to 300 oz / min
- Voltage: 120/240 VAC 50/60 Hz
- Tubing recommendation: 3/8 ID (inlet / outlet)
- Isolated inputs 24 VDC
- Binary or Protocol 31 programming options
- Cellular based – 4G / LTE
- Pneumatic pumps & valves
- Recommended maximum tunnel capacity – 250 lb pockets
- Water connection – 3/4 hose barb
- Air connection – 1/4 OD Push to Connect



Education



Nursing /  
Senior Care



Hotels / Motel  
OPL Laundry



Healthcare  
Co-Op

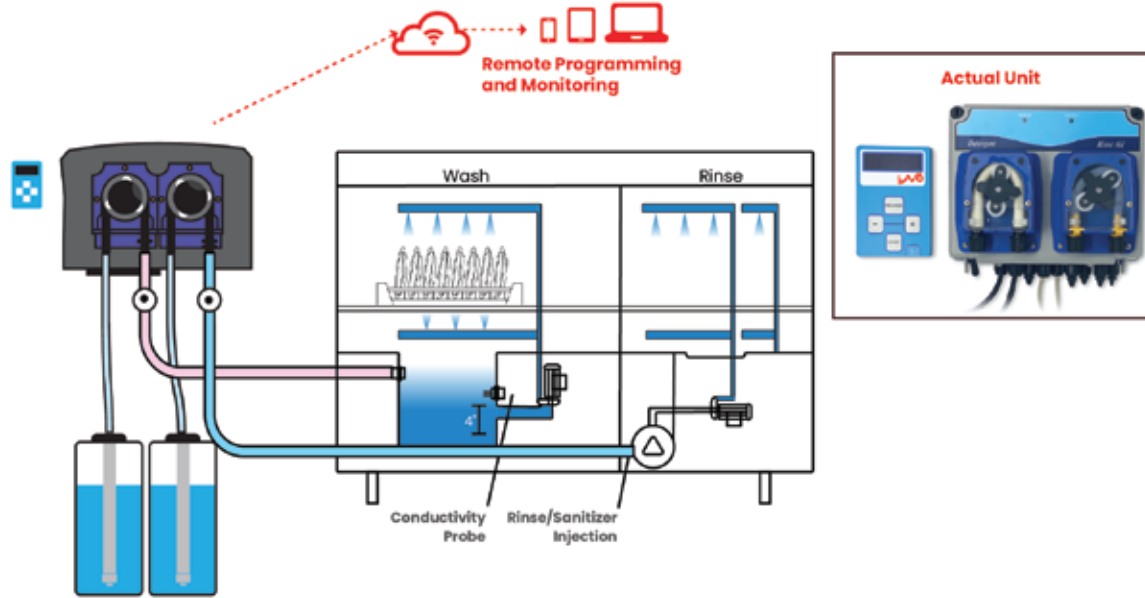


Industrial  
Linen & Uniform

 Connected

# Warewash- GoLink Pro

**LAVO** Simple. Clean. Connected.



## Key Features

- Exact dosing and proof of delivery via flow meter technology
- 24/7 remote monitoring and access
- Remote calibration, programming and troubleshooting
- Cellular connectivity for uninterrupted service and safest data transmission
- Data encryption is standard
- Installation hardware included
- Optional keypad for programming
- Optional third chemical pump

## Specifications

- Pump Output: 10oz / min
- Voltage 120/240 VAC 50/60Hz
- Tubing recommendation: 1/4 OD
- Squeeze Tube / Flow Meter Fittings: 1/4" compression
- IP65 rated enclosure
- Isolated inputs
- Cellular based 4G / LTE
- Recommended for most dish machines sizes and styles



Supermarket



Restaurant



Church and Banquet



Convenience Store

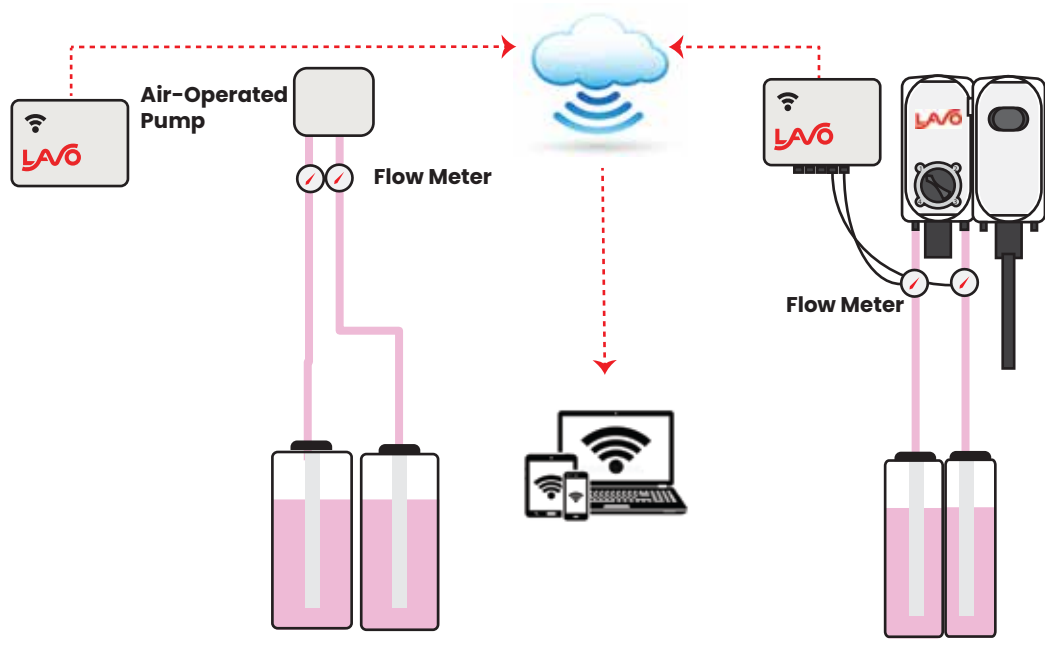


Catering & Food Service


**Connected  
Fluids Management**

 Simple.  
Clean.  
Connected.

### Connected Fluid Monitoring

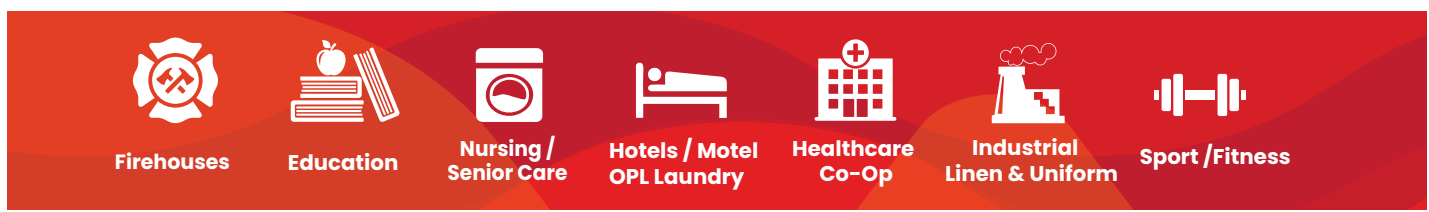


#### Key Features

- Controlled dosing and proof of delivery via flow meter technology
- Used to monitor fluid flow and consumption data on various dispensing equipment.
- Ability to retrofit to most existing installations
- Up to 7 products or 6 products + 1 water meter
- 24/7 remote monitoring and access
- Remote calibration, programming and troubleshooting
- Simple, easy installation
- Cellular connectivity for uninterrupted service and safest data transmission
- Dilution rates displayed in % for ratio validation
- Data encryption standard

#### Specifications

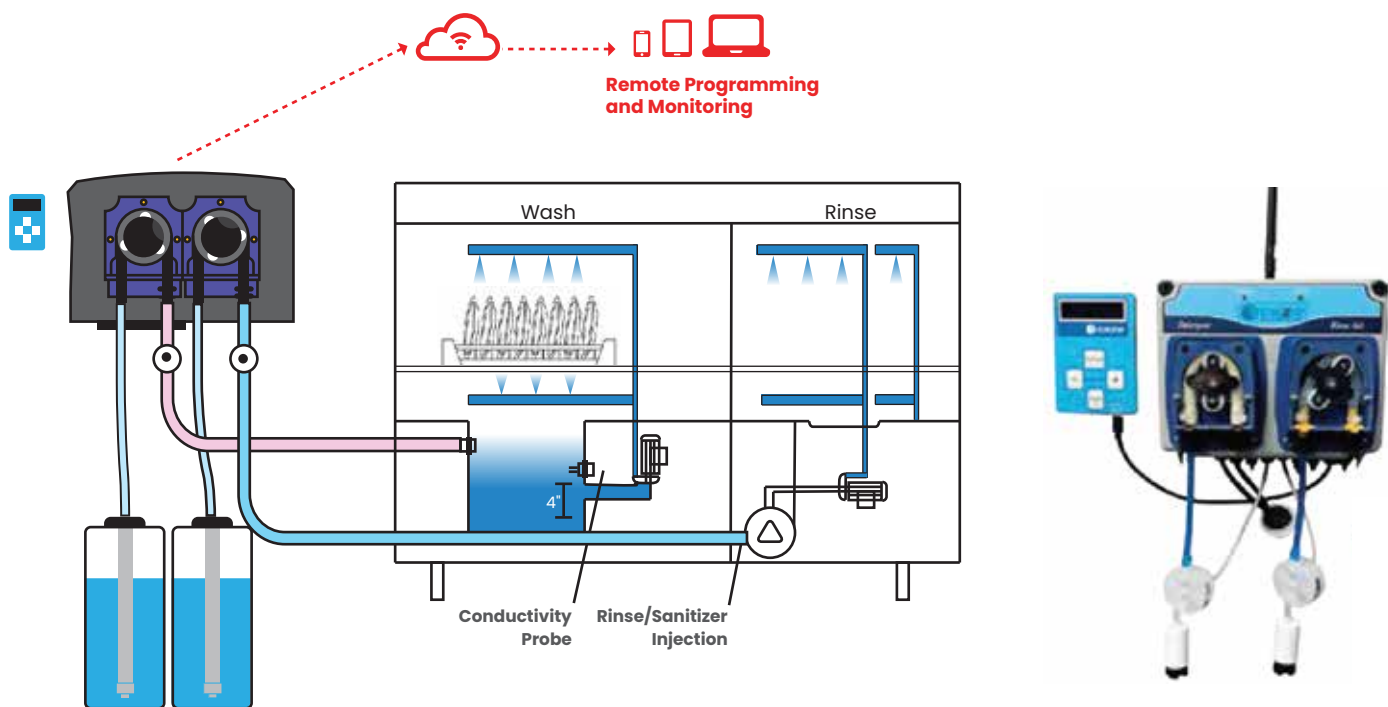
- Low Flow Meter: .05 oz /min (15ml/min) to 30oz/min (900ml/min)
- High Flow Meter: 2.5oz/min (70ml/min) to 170 oz/min (5000 ml/min)
- Voltage 120/240 VAC 50/60Hz
- Tubing recommendation: 1/4"OD
- Cellular based 3G / LTE





# Connected Warewash Solutions

**LAVO** Simple. Clean. Connected.



## Key Features

- Exact dosing and proof of delivery via flow meter technology
- 24/7 remote monitoring and access
- Remote calibration, programming and troubleshooting
- Cellular connectivity for uninterrupted service and safest data transmission
- Data encryption is standard
- Installation hardware included
- Optional keypad for programming
- Optional third chemical pump

## Specifications

- Pump Output: 10oz / min
- Voltage 120/240 VAC 50/60Hz
- Tubing recommendation: 1/4 OD
- Squeeze Tube / Flow Meter Fittings: 1/4" compression
- IP65 rated enclosure
- Isolated inputs
- Cellular based 3G / LTE
- Recommended for most dish machines sizes and styles

## Spare Parts

- Squeeze tubes - EPDM, Viton, Silicone
- 24 VDC motor roller
- Roller Assembly



Supermarket



Restaurant



Church and Banquet



Convenience Store



Catering & Food Service