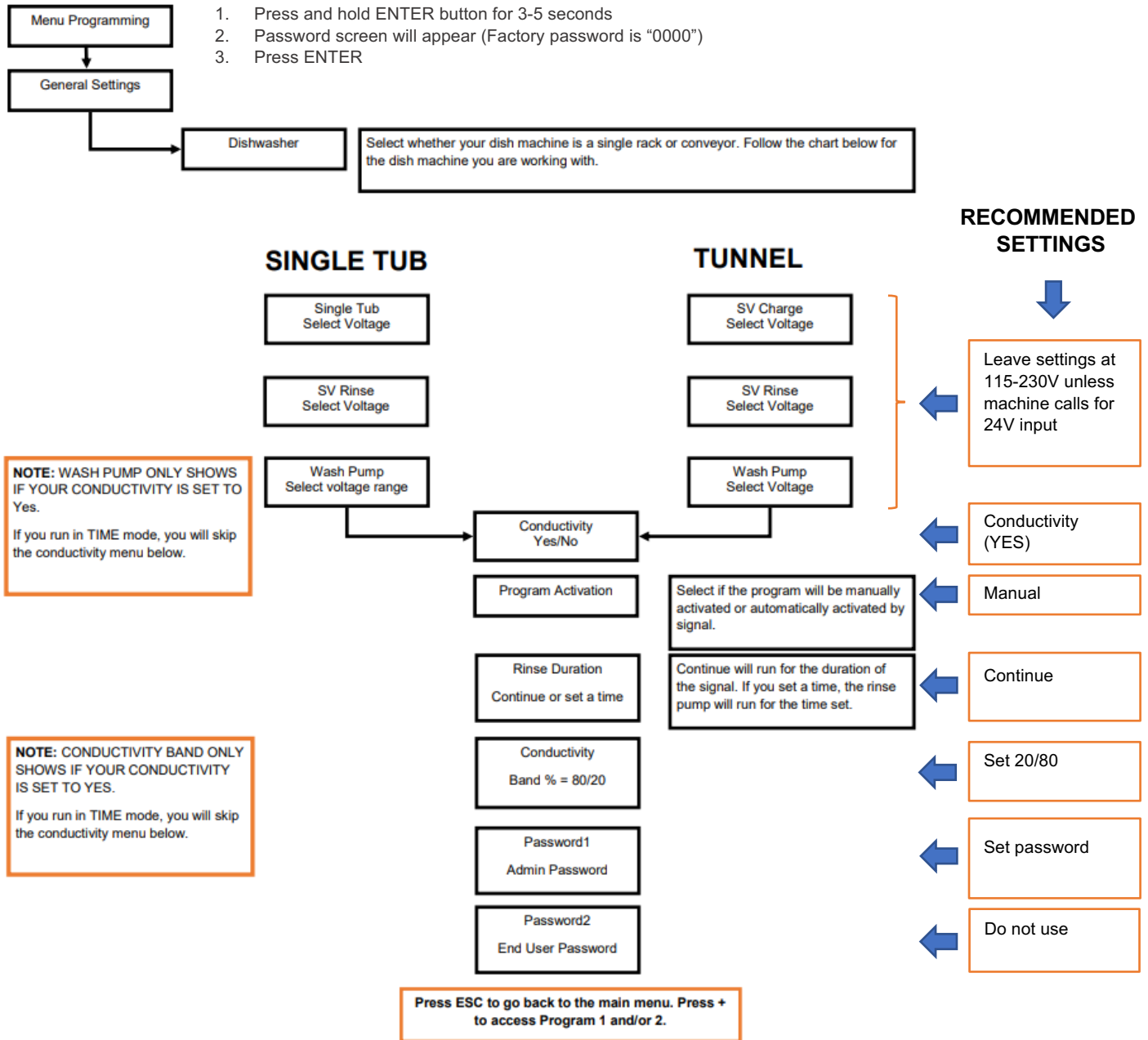
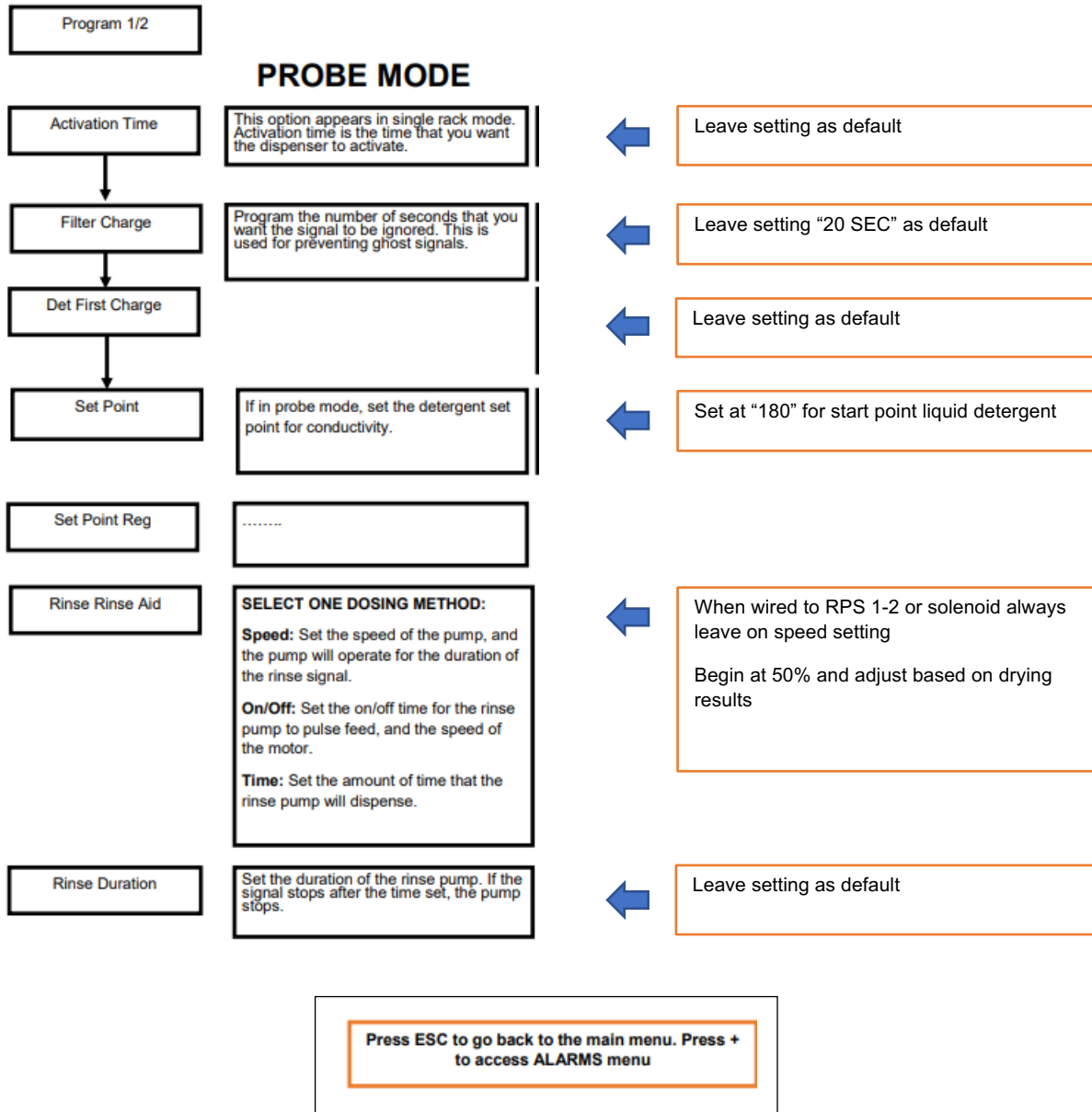


## LavoWash Pro 2/3 Pump Quick Start Guide

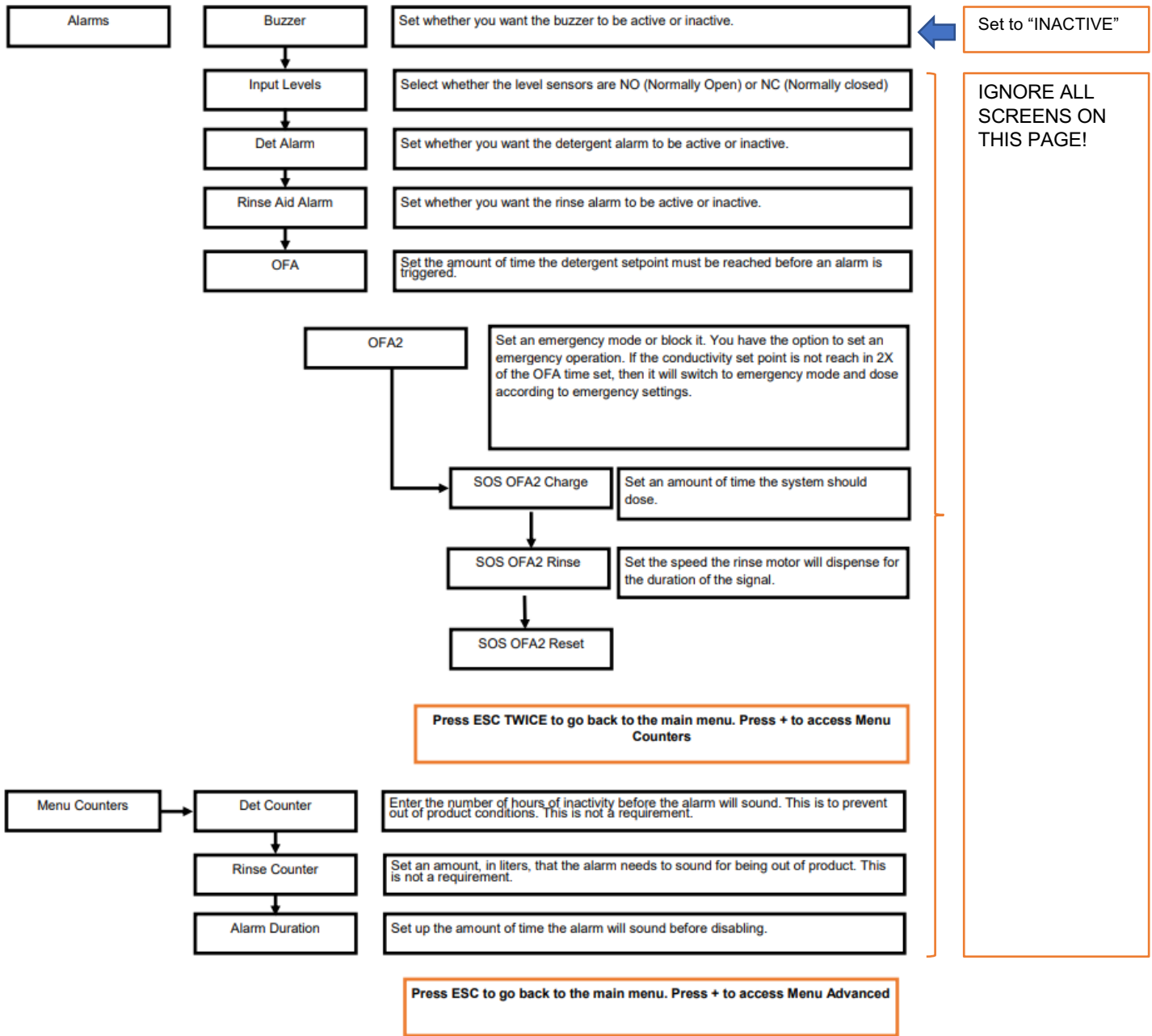
The settings below include General, Program and Alarm settings. Refer to manual for full list of settings/options.



Programming - PROBE MODE



Alarms and Buzzer Settings



**3<sup>RD</sup> PUMP SANITIZER SETTING FOR LO-TEMP MACHINES**

**From Menu Programming, Press ENTER.  
Program 1 will show up.  
Use the + button to scroll to Pump Additive  
Press ENTER**

Additive Type  
Sanitizer

+ ↑ ↓ -

The 3rd pump can be used for sanitizer or descaler. Press ENTER to make an adjustment. Use the + to toggle between options. Press ENTER again to save. Use + to move to the next menu.

Sani pump mode  
Rinse

+ ↑ ↓ -

Decide if the Sanitizer will run with Rinse or Detergent. Press ENTER to make an adjustment. Use the + to toggle between options. Press ENTER again to save. Use + to move to the next menu.

Set to run with RINSE and pump will run during the RINSE CYCLE

Sani speed  
50%

Choose the speed of the sanitizer pump. Press ENTER to make an adjustment. Use the + to toggle between options. Press ENTER again to save.

Begin setting at 20% speed and adjust with Chlorine test strips to desired PPM

OR

Desc. Pump  
Speed

+ ↑ ↓ -

If you selected for the 3rd pump to dose a descaler product, this menu option will appear.  
Speed: The pump will run for the duration of the rinse signal. You can adjust the speed of the motor next if you select this.  
Time: The pump will come on for a specific number of seconds. You can adjust the seconds next if you select this.  
Press ENTER to make an adjustment. Use the + to toggle between options. Press ENTER again to save.

DO NOT USE THIS SETTING

Sani speed  
50%

If you selected for the sanitizer pump to run off of speed this option will appear. Likewise, if you selected for the sanitizer pump to run off time, you will see the option to adjust the time setting. Press ENTER to make an adjustment. Use the + to toggle between options. Press ENTER again to save.

Press ESC to go back to the main menu

