



**Simple.
Clean.
Connected.**

**2021
Connected
Products**

Contents

Benefits of Connected	3
-----------------------	---

On-Premise Laundry

OPL – MultiLink Pro	5-6
OPL – OPLink Pro	7
OPL – GoLink Pro	8

Commercial Laundry

Tunnel Link Pro	10
Washer Link Pro	11

Accessories for Laundry Systems

Accessories	13-14
-------------	-------

WareWash

Lavo GoLink Pro	16
-----------------	----

Fluid Monitoring

FluidLink Pro	18
---------------	----

Connected Devices Map	19
-----------------------	----

Note	20
------	----

Warranty	21
----------	----

Benefits of Connected Laundry Systems

Welcome to the future of Commercial Laundry and Fluids Monitoring!

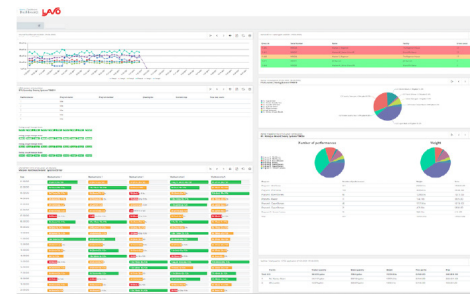
Lavo IoT Laundry and Fluid Monitoring Solutions provide customers with unprecedented amounts of information. Wash Formula Data, Flow Rate Information, and Consumption Data are all logged to the cloud with a time/date stamp and allows users to monitor activities in real-time. This invaluable feature provides key insights to your operations and allows you to be proactive to ensure the effectiveness of the laundry facility. The reporting capabilities also allow users to provide productivity reports and monitor trends, helping to maximize laundry and other facilities efficiency/productivity.

24/7/365 Connectivity

- › Real-time operating view of the laundry facility from anywhere...any time
- › Reduce service costs with a proactive service model
- › Email alert notifications
- › 100% asset visibility
- › Connects to all cellular service providers
- › Data encryption standard

Reporting

- › Customizable reports for end-customers
- › Totals by Formula
- › Total Consumption
- › Detailed reporting for monitoring laundry operation in real-time
- › Graphical charts for data analysis
- › Daily Consumption
- › Consumption Comparison
- › Product Flow Rate
- › Washaisle Histogram



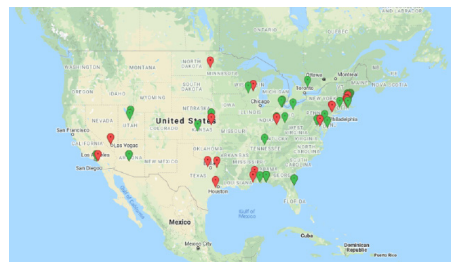
Custom Dashboard Views

A screenshot of the Lavo IoT dashboard showing a detailed table of laundry formulas. The table has columns for Formula ID, Formula Name, Formula Type, Formula Description, Formula Data, and Formula Status. It lists various formulas used in laundry operations, such as 'Wash Formula 1', 'Wash Formula 2', etc., and provides detailed data for each.

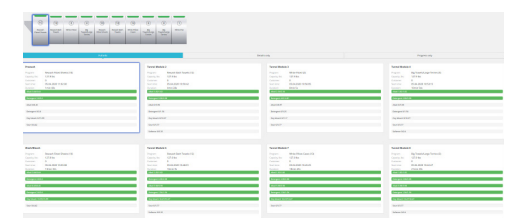
Formula Detail



Flow Rates



Asset Visibility Map



Live Detailed Water & Tunnel Views

Customer Review

"This is hands down the best system I have ever worked with.
The accuracy and precision is outstanding!"

On-Premise Laundry Products

OPL – MultiLink Pro

Application: OPL Servicing up to 5 Washers

Connected Benefits

- > 24/7/365 Connectivity
- > Real-time view of system operation
- > Remote Calibration, Programming and Troubleshooting
- > Email alerts for errors/alarms
- > Connects with all cellular providers

Product Features

- > Services up to 5 Washers with up to 8 chemicals
- > Faster Installation
- > No squeeze tube maintenance
- > Product accurately delivered with flow meter
- > Up to 128 Formulas with AFS/Manual formula selection mode
- > Pre-wired for 120 VAC Outlet
- > Can be used to convert existing peristaltic systems

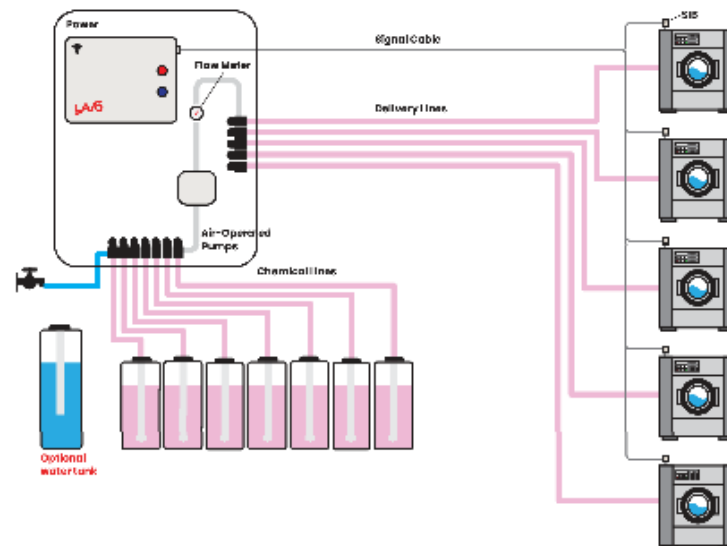
Two Pump Types Available

- > Electric Diaphragm Pump @ 30 oz/min (for up to 450 lbs total)
- > Pneumatic Diaphragm Pump @ 120 oz/min (for up to 900 lbs total)

Installation and spare parts kits available

Signal Interface Box required for each Washer:

- > Signal Interface v1, pre-wired input signals and power connection
- > Signal Interface v2, Washer Hold relay and optional wireless communication



Specifications

- > Power (100 – 240 VAC 50/60 Hz)
- > Water (min 1 GPM recommended)
- > Air (min 5 CFM recommended, for pneumatic pumps only)
- > 3/8" ID tubing connections for chemicals and washers
- > 1/2" barbed fitting for water (cold) inlet
- > 1/4" OD push-to-connect (for pneumatic pumps only)

OPL – MultiLink Pro

MultiLink Pro PN	Description
530-0035-E	CMWDS, 3 Washers, 5 Chemicals, Electric Pump
530-0038-E	CMWDS, 3 Washers, 8 Chemicals, Electric Pump
530-0055-E	CMWDS, 5 Washers, 5 Chemicals, Electric Pump
530-0055-P	CMWDS, 5 Washers, 5 Chemicals, Pneumatic Pump
530-0055-P-AF	CMWDS, 5 Washers, 5 Chemicals, Pneumatic Pump, Air Flush
530-0056-E	CMWDS, 5 Washers, 6 Chemicals, Electric Pump
530-0056-P	CMWDS, 5 Washers, 6 Chemicals, Pneumatic Pump
530-0056-P-AF	CMWDS, 5 Washers, 6 Chemicals, Pneumatic Pump, Air Flush
530-0058-E	CMWDS, 5 Washers, 8 Chemicals, Electric Pump
530-0058-P	CMWDS, 5 Washers, 8 Chemicals, Pneumatic Pump
530-0058-P-AF	CMWDS, 5 Washers, 8 Chemicals, Pneumatic Pump, Air Flush

OPL – OPLink Pro

Application: Washers up to 450 lbs

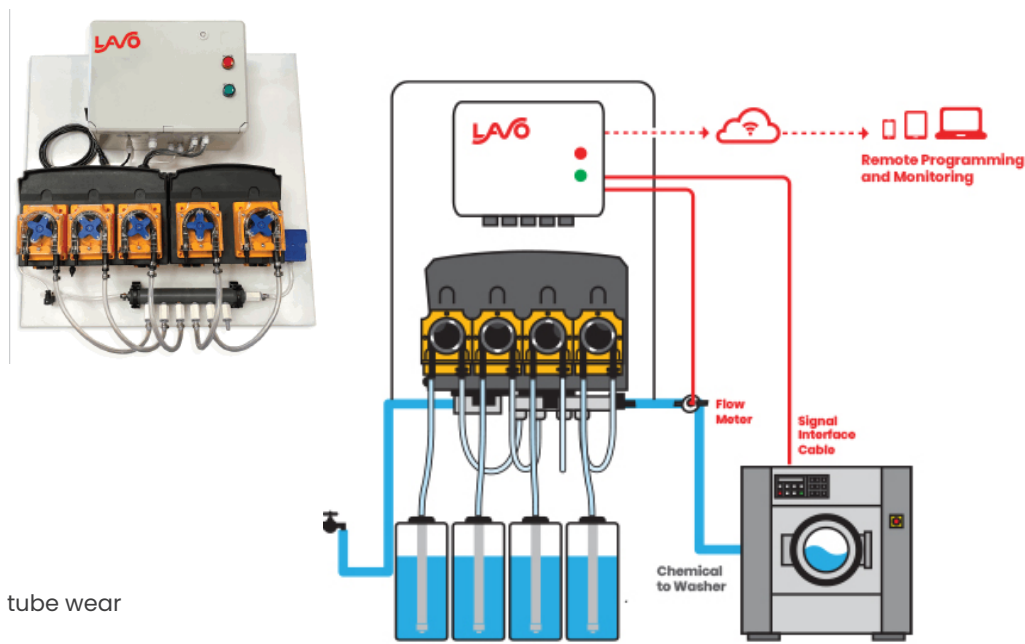
Connected Benefits

- > 24/7/365 Connectivity
- > Real-time view of system operation
- > Remote Calibration, Programming and Troubleshooting
- > Email alerts for errors/alarms
- > Connects with all cellular providers

Product Features

- > 3/4/5/6 pump versions
- > Integrated water valve, flush manifold and flow meter
- > Product accurately delivered with flow meter, compensating for squeeze tube wear
- > 8 Optically Isolated Signal Inputs (10-240 VAC/DC)
- > Formula selector included
- > Up to 100 Formulas with AFS/Manual formula selection mode
- > Pre-wired for 120 VAC Outlet
- > Adjustable pump speed for 17 - 68 oz/min
- > Installation and spare parts kits available

Part Number	Description
520-0003	OPLink Pro, 3 Pumps, 4-Product Manifold, Flow Meter
520-0004	OPLink Pro, 4 Pumps, 4-Product Manifold, Flow Meter
520-0005	OPLink Pro, 5 Pumps, 6-Product Manifold, Flow Meter
520-0006	OPLink Pro, 6 Pumps, 6-Product Manifold, Flow Meter



Specifications

- > Power (100 – 240 VAC 50/60 Hz)
- > Water (min 1 GPM recommended)
- > Signals (10-240 VAC/DC)
- > 3/8" ID tubing connections for chemicals and washer
- > 3/4" MGHT connection for (cold) water inlet
- > IP65 rated enclosure

OPL – GoLink Pro

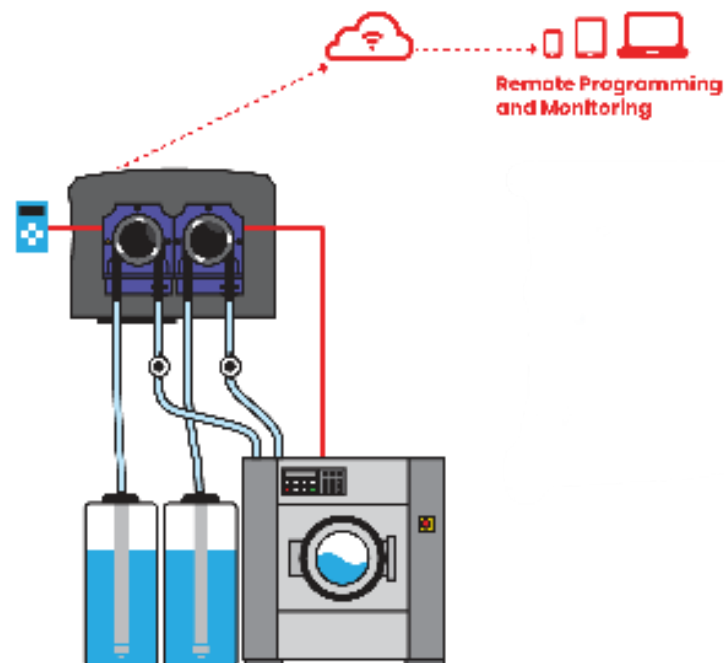
Application: Top load style washers

Connected Benefits

- > 24/7/365 Connectivity
- > Real-time view of system operation
- > Remote Calibration, Programming and Troubleshooting
- > Email alerts for errors/alarms
- > Connects with all cellular providers

Product Features

- > 2 and 3 pump versions
- > Flow meter included for each pump
- > 3 Optically Isolated Signal Inputs
- > Formula selector included
- > Up to 100 Formulas
- > AFS or Manual Formula Selection
- > Power Supply Voltage: 100-240 VAC (480 VAC machines require a step-down transformer)
- > Input Signal Voltage: 10-240 VAC/DC
- > Pump output ~8oz /min



Part Number	Description
510-LAUN-2	2-Pumps/Flow Meters, Formula Sector
510-LAUN-3	3-Pumps/Flow Meters, Formula Sector

Specifications

- > Power (100 – 240 VAC 50/60 Hz)
- > Signals (10-240 VAC/DC)
- > 1/4" OD Compression Fittings for chemicals
- > IP65 rated enclosure

Commercial Laundry Products

Commercial Laundry: Washer Link Pro

Application: Large Laundry servicing up to 15 Washers

Connected Benefits

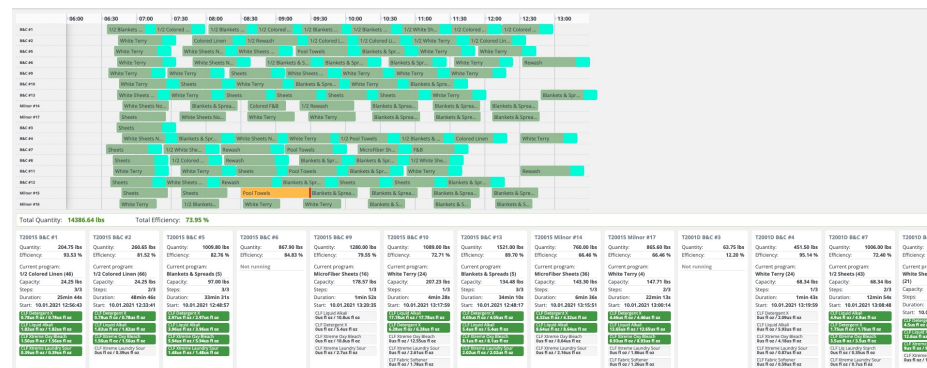
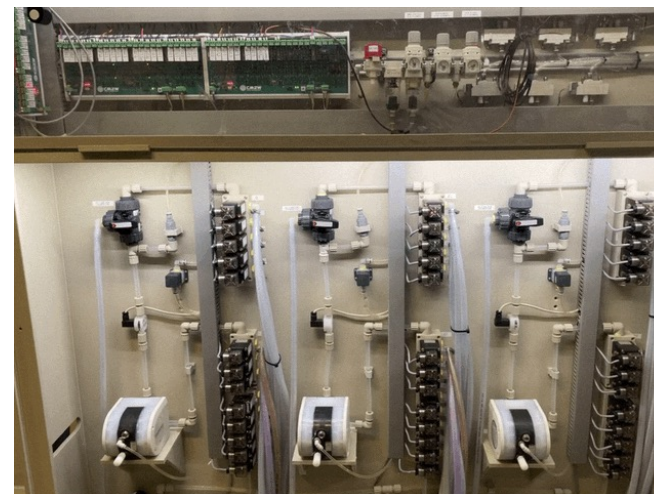
- › 24/7/365 Connectivity
- › Real-time view of system operation
- › Remote Calibration, Programming and Troubleshooting
- › Email alerts for errors/alarms
- › Connects with all cellular providers

Product Features

- › Services up to 15 Washers with up to 8 Chemicals per channel
- › 1, 2 and 3 channel systems servicing 5 Washers per channel
- › Pneumatic diaphragm pumps
- › Product accurately delivered with flow meter
- › Up to 128 Formulas with AFS/Manual formula selection mode
- › Washer hold functionality
- › Dashboard for monitoring Wash Isle efficiency

Installation and spare parts kits available

- › Signal Interface Box required for each Washer
- › Signal Interface v1, pre-wired input signals and power connection
- › Signal Interface v2, Washer Hold relay and optional wireless communication



Specifications

- › Power (100 – 240 VAC 50/60 Hz, Pre-wired for 120 VAC Outlet)
- › Water (min 1 GPM recommended each channel, 3/4" barbed fitting)
- › Air (min 5 CFM recommended each channel, 1/4" PTC fitting)

Commercial Laundry: Tunnel Link Pro

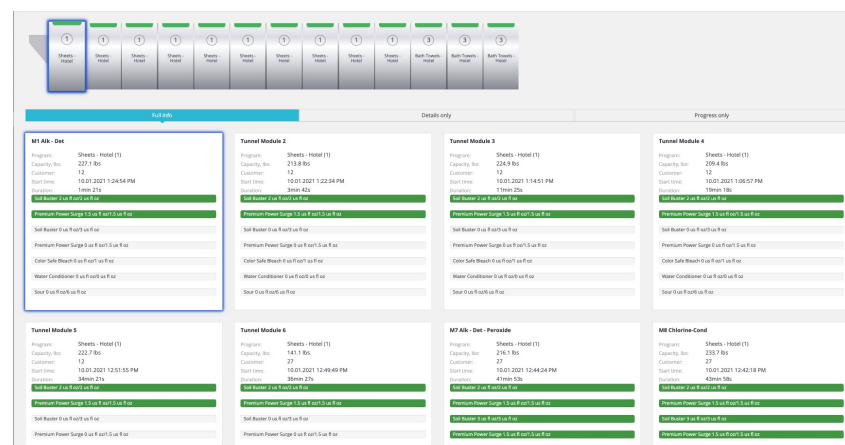
Application: Large Laundry servicing Tunnel Washers

Connected Benefits

- 24/7/365 Connectivity
- Real-time view of system operation
- Remote Calibration, Programming and Troubleshooting
- Email alerts for errors/alarms
- Connects with all cellular providers

Product Features

- Up to 10 pumps and 7 injection points
- 3 Injection Configurations available depending on requirements
- Shared pump with chemical manifold
- Direct injection (directly to tunnel)
- Direct Injection (w/ Flush Manifold)
- Pneumatic diaphragm pumps
- Product accurately delivered with flow meter
- Works with Binary, BCD and Protocol 31 signals
- Automatically adjusts product dosage on weight input
- Up to 128 Formulas
- Pre-wired for 120 VAC Outlet
- Dashboard for monitoring Tunnel efficiency
- Installation and spare parts kits available



Specifications

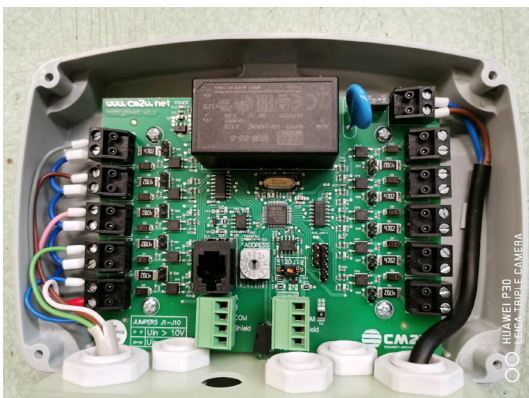
- Power (100 – 240 VAC 50/60 Hz, Pre-wired for 120 VAC Outlet)
- Water (min 1 GPM recommended each channel, 3/4" barbed fitting)
- Air (min 5 CFM recommended each channel, 1/4" PTC fitting)
- 3/8" barbed fittings for chemicals and washers)

Accessories for Laundry Systems

Commercial Laundry Systems – Accessories

Signal Interface Box v1

- › Part Number: 550-SIB+PROG
- › Pre-wired power and signal inputs
- › 10 optically isolated inputs
- › Formula Selector included



Break Tanks

- › Available in 5-15 gal. tank sizes
- › Booster pump available

Signal Interface Box v2

- › Part Number: 550-SIB2+PROG
- › Includes Washer-hold relay
- › 10 optically isolated inputs
- › Formula Selector included
- › Wireless communication optional



Installation Kits

- › Part Number – 530-KIT-PANEL
- › Part Number – 540-KIT-CABINET

Drum Wands

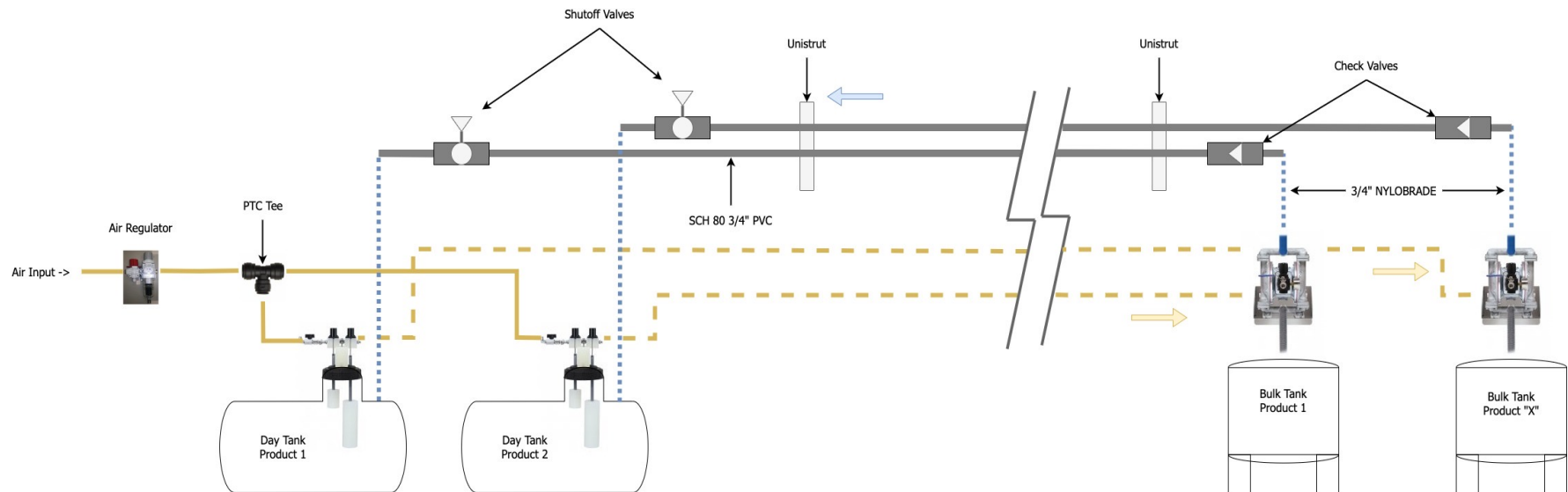
- › Available for 15/55 GAL barrels
- › Integrated check valve
- › Single and Multi-port available



Commercial Laundry Systems – Accessories

Bulk Transfer System

- > Fully automatic, air-operated system that requires no electric
- > Day tanks available from 7 gals – 60 gals with integrated pick-up wands
- > Recommended operating pressure of 40 PSI



Warewash Products

WareWash – Lavo GoLink Pro

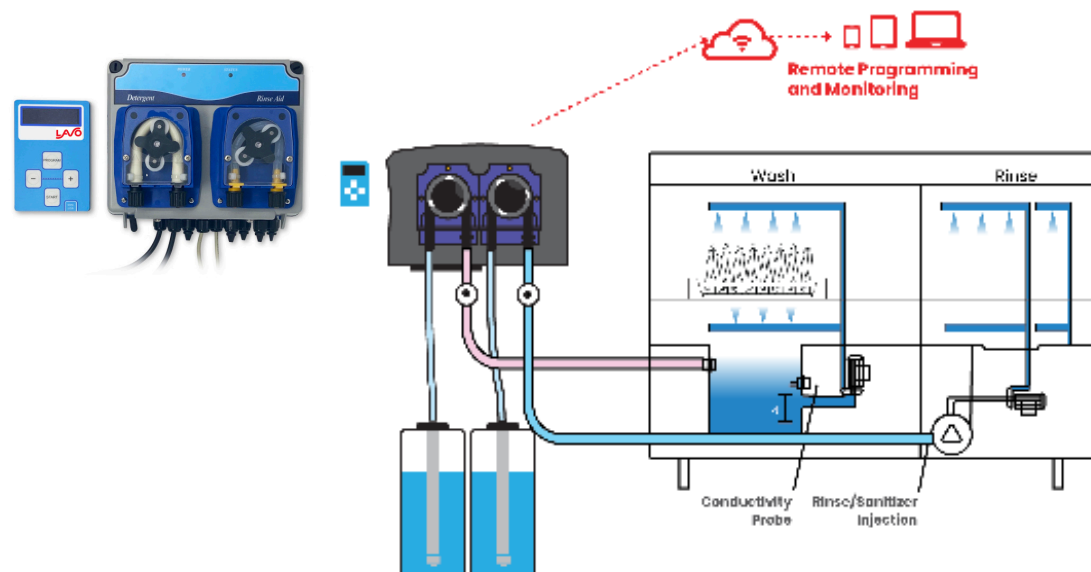
Application: Conveyor/Flight/Door-type Machines

Connected Benefits

- > 24/7/365 Connectivity
- > Real-time view of system operation
- > Remote Calibration, Programming and Troubleshooting
- > Email alerts for errors/alarms
- > Connects with all cellular providers

Product Features

- > 2 and 3 pump versions
- > Flow meter included for each pump
- > 3 Optically Isolated Signal Inputs
- > Formula selector included
- > All injection fittings included
- > Pre-wired signal and power cables
- > Digital inductive probe available
- > Power Supply Voltage: 100-240 VAC (480 VAC machines require a step-down transformer)
- > Input Signal Voltage: 10-240 VAC/DC
- > Can also be programmed for LAUNDRY and DRAIN Dispensing Applications



Specifications

- > Power (100 – 240 VAC 50/60 Hz)
- > Signals (10-240 VAC/DC)
- > 1/4" OD Compression Fittings for chemicals
- > IP65 rated enclosure

Part Number	Specifications
510-WARE-2	2-Pumps/Flow Meters, Formula Sector
510-WARE-3	3-Pumps/Flow Meters, Formula Sector

Fluid-Monitoring Products

Fluid – FluidLink Pro

Application: Eductors, Peristaltic Pumps, Electric Pumps,

Connected Benefits

- > 24/7/365 Connectivity
- > Real-time view of system operation
- > Remote Calibration, Programming and Troubleshooting
- > Email alerts for errors/alarms
- > Connects with all cellular providers

Product Features

- > Monitor up to 7 chemicals
- > Remote calibration and setup
- > Alarm settings for Low and High flow rates
- > Report on Dilution % or Consumption

Flow Meter Options

- > Low Flow Flowmeter (0.5 – 30 oz/min) w/ 1/4" compression fittings
- > High Flow Flowmeter (2.5 – 170 oz/min) w/ 3/8" barbed fittings
- > Oval Gear Flowmeter for viscous products

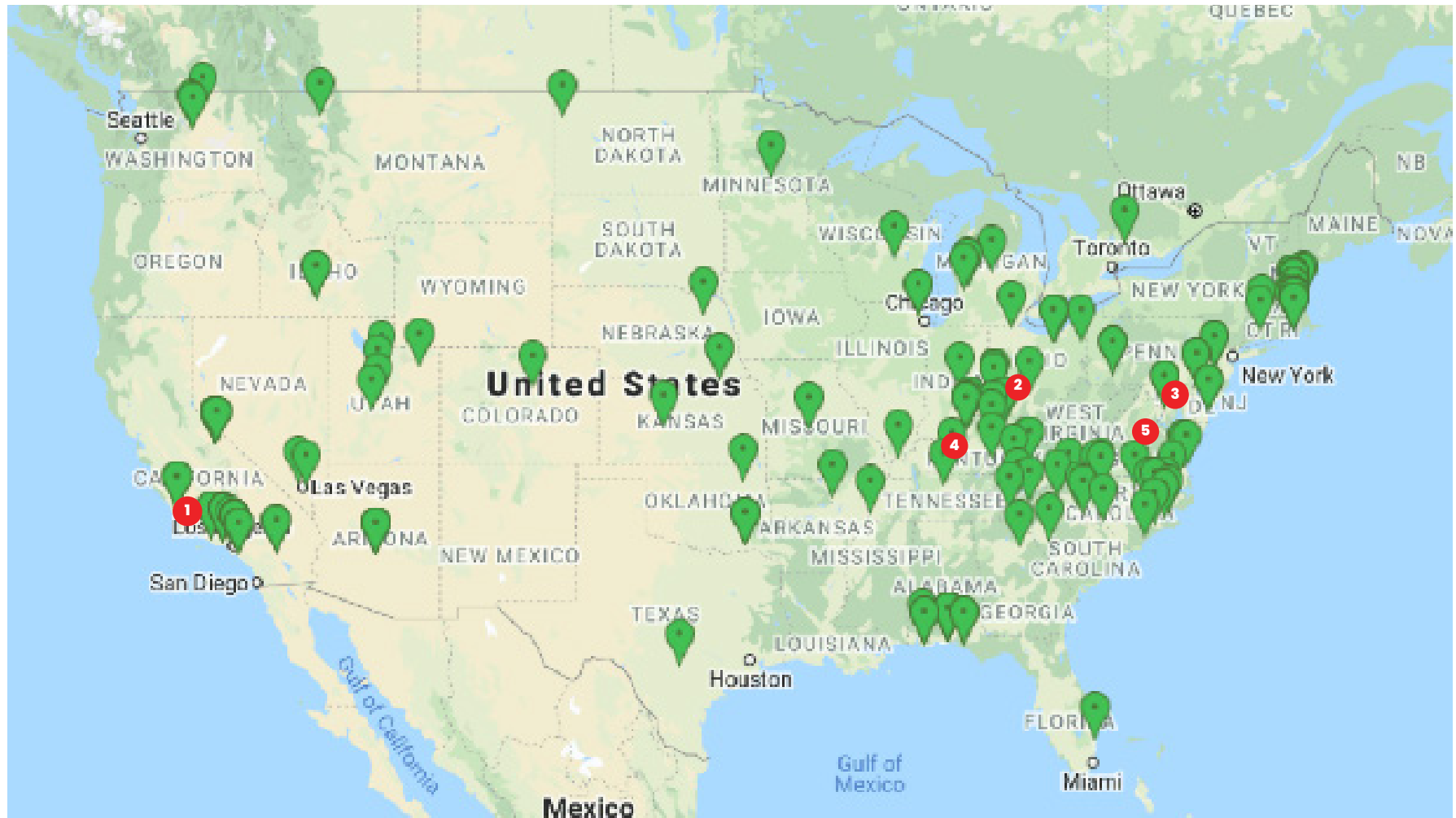
Specifications

- > Power (100 – 240 VAC 50/60 Hz, Pre-corded for 120 VAC outlet)



Lavo has connected thousands of washer extractors that are monitored in real time in North America.

Connected Devices Map



**Lavo Connected
Device**

1 Lavo Solutions, LLC
Worldwide Headquarters
23192 Verdugo, Suite D
California
(949) 377-1250

2 Campbell Dodson
Ohio
(513) 309-3221

3 Bob Guilday
Maryland
(410) 661-0329

4 Jason McDaniel
Kentucky
(859) 663-7879

5 Rob Johnson
Virginia
(540) 305-0305

Warranty

Company warrants its Goods to be free from material defects in material and workmanship for a period of one year except: i. when Goods have been modified following delivery and/or subject to improper handling, storage, installation, operation, or maintenance unless those modifications have been authorized in writing by Seller. ii. when an item is purchased by Company as a component part of the Goods, except to the extent to which such item or items are covered by the warranty, if any, of the original manufacturer. iii. when an item which is a component part of the product has been furnished by Buyer. iv. no warranty of a component part shall extend beyond the warranty period of the device in which such component part is incorporated. b. There is no implied warranty of merchantability or of fitness for particular purpose and there are no warranties of any nature except as set forth in paragraph 3 herein. Any claim by Buyer made pursuant to Company's warranty must be made in writing. Company shall have the right to inspect the Goods claimed to be defective and shall have the right to determine the cause of such alleged defect. All Goods replaced or repaired by Company under its warranty shall be replaced or repaired F.O.B. Company's facility. Buyer must notify Company, in writing, within fifteen (15) days from receipt of Goods of any obvious defect in the product, or shortages, or Company shall have no obligation to correct such defect. Company shall have the option of re-inspection at Buyer's plant or its own before allowing or disallowing Buyer's claim. Defects that do not impair service shall not be a cause for rejection or recovery under any warranty. Buyer assumes full responsibility for the use and application of the product. Buyer accepts Company's design and material

selection and specifications in placing this order unless other specifications are agreed to in writing by both parties prior to the manufacture of Goods by Company. Statements and data relating to Products on Seller's literature and website are not intended to define the performance of the product in actual usage or in combination with other equipment or processes. These statements should not be used by Customer solely as an indication of performance or suitability for specific applications or uses.

THE ABOVE WARRANTIES ARE THE SOLE AND EXCLUSIVE WARRANTIES MADE BY SELLER WITH RESPECT TO ALL PRODUCTS AND SERVICES.

Components and spare parts such as O-rings, squeeze tubes, roller blocks and other plastic components are considered to be wear parts and are not warranted. Seller shall have no warranty or liability for product that was damaged during shipment, product that is not being used in its recommended use, product that is not operated in accordance with the operating manual and procedures, product that was not properly installed, product used in a manner that is inconsistent with its designed purpose, product that is subject to a power surge or similar event, products that fail due to usage of a non Lavo Solutions replacement or spare part or product that was not maintained in accordance with recommended maintenance programs.

Visit lavosolutions.com/LAVO-T&C-02-2018.pdf for full terms and conditions.